

PH: 07 3733 1520



**9am - Friday 13<sup>th</sup> June, 2025**

# **RICHMOND FIELD DAYS ALL BREEDS BULL SALE**

**RICHMOND RACECOURSE, RICHMOND**  
**43 Bulls - 6 Breeds - Semen & Morphology Tested**



**Anthony Ball**  
0428 275 499



**Matthew Kennedy**  
0488 418 788



**Ashley Naclerio**  
0400 448 679



# Angel Flight



**WHERE DISTANCE IS A BARRIER,  
WE HELP YOU CROSS IT.**



For over 22 years, Angel Flight has provided free non-emergency flights and ground transport for rural Australians who need to travel long distances for medical care.

With the support of our volunteer pilots and drivers, we've helped more than 100,000 country families access vital health services — at no cost to them. We're proud to stand by rural communities and remain committed to bridging the distance when it matters most.

**ANGELFLIGHT.ORG.AU**

## RICHMOND AGENTS



**Anthony Ball**  
0428 275 499



**Matthew Kennedy**  
0488 418 788



**Ashley Naclerio**  
0400 448 679

**Welcome you to the**

# **RICHMOND FIELD DAYS ALL BREEDS BULL SALE**

## **SALE VENDORS**

GI BRAHMANS ~ MOONDAH CHAROLAIS ~ LAZY A DROUGHTMASTERS  
~ GYRANDA SANTA GERTRUDIS ~ BARRONESSA FARMING ULTRA  
BLACKS ~ WOONALLEE SIMMENTALS

**“Bulls for the North”**

**6 Vendors - 6 Breeds - Semen & Morphology Tested**  
*Buyer Incentives for Highest Priced Bull & Volume Buyer*

*Bull Sale held in conjunction with the  
Richmond Field Days 13-14<sup>th</sup> June 2025*

**9am, Friday 13<sup>th</sup> June, 2025**  
**Richmond Racecourse Grounds**

**View photos, videos and bid online with  
Auctions Plus**



# WELCOME

Thank you for supporting the 2025 Richmond Agents All Breeds Bull Sale, held annually at the Richmond Field Days. Since its inception in 2017, the “Bulls for the North” Sale has provided a platform to showcase local studs to a local audience, requiring minimal feeding preparation and adaptation.

This year, we are offering an excellent selection of bulls, all of which have been semen and morphology tested and, if necessary, cleared of the dip. These bulls have undergone light preparation and are ready to perform!

We welcome first time vendors Alex & Maree Power from the Lazy A Droughtmaster Stud, Tom & Elizabeth Baker from the Woonallee Simmental Stud and Gavin Webber from Triple E Brahman.

We are thrilled to welcome back our returning studs and also want to recognize the significant efforts of Peter Mahony of Gylanda Santa Gertrudis for transporting their bulls to Richmond. Your support for these studs is greatly appreciated.

Furthermore, we acknowledge the continued loyalty of our established studs: Kelvin and Libby Harriman of GI Brahman; Myles and Barbara Davison of Moondah Charolais and Brahman; Joe & Sharon, Geoff & Shane Strazzeri of Baronessa Farming Ultra Balcks and Gavin & Jackie Webber of Jegah Brahman.

We extend our gratitude to the ongoing support and sponsorship from Gener8 Reproduction, Auctions Plus, Jim Pola and Allflex.

We sincerely hope you support these fantastic vendors and their impressive 2025 lineup of “Bulls for the North”.

Sincerely,

*Luke Westaway, James Coates & Ashley Naclerio,  
Stockplace Marketing*

*Matthew Kennedy,  
Kennedy Rural*

*Anthony Ball, Elders QLD/NT Stud Stock*

THANK YOU TO OUR SPONSORS



**AuctionsPlus**

*Buy and Sell stock nationally*



# VENDORS OF 2025

**GI BRAHMANS** GI Brahman Stud was first established at Glen Idol on the Atherton Tablelands in 1982 by Ron and Grace Harriman. They decided to focus on breeding polled brahmans with good size and high purity. The stud is now based at Brookfield, only 15 km from Hughenden, to establish a bull depot closer to our main clients in northern Queensland.

After more than 40 years of using exclusively polled bulls, we are achieving more than 90% polled calves even out of horned cows. We use the horn-poll test for all our sale bulls with a high percentage returning PP. The aims of the stud are to produce a highly fertile polled animal while still maintaining mature weight and the characteristics of a pure brahman.

Our leading bulls are sold at multivendor sales across northern Queensland and the remainder are offered for private inspection. Stud heifers are sold by private inspection, at stud sales and online. Frozen semen is available from our leading sires, with commercial rates available.

**MOONDAH CHAROLAIS & BRAHMANS** Moondah Station is located south of Prairie and has been owned and operated by Myles & Barbara Davison since 1982. During this time, they made their first purchase of a Charolais bull in 1990 and have continued to grow and improve their herd with the breed. For the past 31 years they have focused on bone structure and fertility within the herd to optimise weight gain and production. We monitor our fertility rate by control mating and annually pretest our cows to ensure they provide us with a calf every year.

For the past 17 years, Barbara has also focused heavily on the temperament of her cattle herd. As a family run business, it is an enjoyment to be able to work cattle within a stress free environment and know that every family member is safe within the yards. This is one of the main focuses we would like to pass on through the genetics of our herd bulls.

**LAZY A DROUGHTMASTERS** The Lazy A Droughtmaster stud and commercial herd is situated at Debella station, 100 km north of Julia Creek on the Saxby River. The stud prospers in prime Southern Gulf country ranging from open blacksoil downs and forest conditions.

Established in 2007 by Alex and Maree Power, Lazy A Droughtmasters is family owned and operated from grass roots to premium quality sale day finish. Droughtmaster cattle have been a lifelong passion for Alex and Maree as they built the stud from the ground up.

These foundations have been established and built on the framework of relaxed temperament, strong poll genetics and consistent fertility in the herd, while maintaining flexibility and adaptability to handle a diverse range of grazing country and conditions.

# VENDORS OF 2025

## **GYRANDA SANTA GERTRUDIS STUD** Gyranda -Stud Number 3

– is one of the oldest Santa studs in Australia. Today Peter and Nikki Mahony own the operation which sells 250+ bulls annually throughout northern Australia. With a focus on fertility, their bulls carry a reputation for maintaining condition across seasons and longevity. Supporters of the Richmond sale since the initial sale in 2019, the bulls offered this year are rising two year olds from the top end of their sale bulls. All Classified, with a full set of EBV data to provide that extra reassurance.

**WOONALLEE** Woonallee is a progressive family-owned Simmental operation which is one of the oldest and largest registered herds in Australia. Our breeding objectives are to produce bulls that are high performing with explosive growth from a young age, have extra fat cover and IMF, are super sound with the ability to cover the ground and most importantly the ability to adapt, thrive and survive in whatever environment they are put in.

We have worked extremely hard and travelled the world to find Black Simmental genetics that can work, add profitability, longevity and fertility to a Northern breeding herd and are confident with what we have on offer. All bulls offered have been DNA tested, sire verified, tested for colour and polled status.

**BARRONESSA FARMING** At Barronessa, we specialize in breeding Brangus and Ultrablack cattle specifically for the northern region, ensuring they thrive in the challenging conditions here. We are committed to a rigorous selection program, ensuring only our most productive cattle are retained. Females are the cornerstone of a successful program and at Barronessa our female cattle possess essential traits for commercial success: short gestation lengths, excellent milk, and the ability produce calves with top growth even in difficult seasons.

Our bulls are the outcome of a meticulously designed and executed breeding program, focused on balanced birth weights, optimal yields, rapid weight gain, the ability to develop fat cover on pasture or in feedlots, and overall survivability.

We use advanced breeding technologies such as IVF, artificial insemination, genomic analysis, and EBV measurements to ensure genetic progress and reliability in each generation of our cattle.

Choosing Barronessa Brangus and Ultrablacks means investing in cattle bred to excel in northern conditions, providing you with confidence in their performance and ensuring your commercial success.



STUD STOCK

# FOR TRUSTED STUD STOCK SERVICE

Elders Stud Stock QLD/NT are your leading stud sales team with proven experience, professional service and a comprehensive network.

Speak to our trusted team about your stud stock requirements today, and how we can support your business.



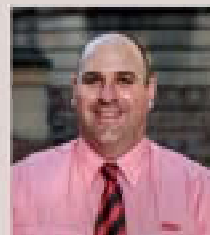
**Michael Smith**  
Toowoomba  
0428 541 711



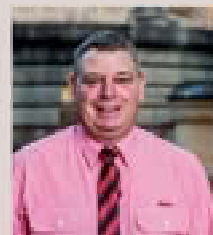
**Andrew Meara**  
Toowoomba  
0427 210 634



**Jenni O'Sullivan**  
Toowoomba  
0428 222 080



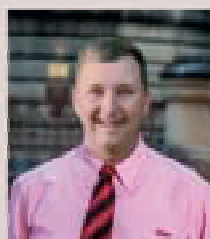
**Anthony Ball**  
North Queensland  
0428 275 499



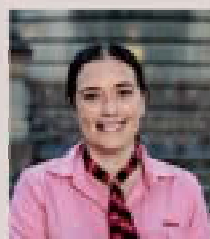
**Mark Scholes**  
Rockhampton  
0409 694 696



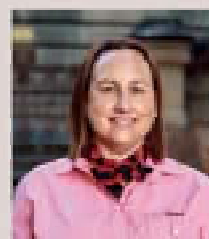
**Randall Spann**  
Rockhampton  
0429 700 332



**Mitchell Jackson**  
Murgon  
0498 670 392



**Eliza Connors**  
Rockhampton  
0419 644 813



**Sandra Wilson**  
Toowoomba  
0491 844 868

FOR THIS SEASON  
AND THE NEXT



## **Kennedy Rural**

Livestock & Rural Property

### **YOUR RURAL PROPERTY & LIVESTOCK MARKETING SPECIALISTS**

Matthew Kennedy

0488 418 788

mk@kennedyrural.com.au

Rodney Kennedy

0488 418 577

rk@kennedyrural.com.au

Dan Sheahan

0488 404 244

ds@kennedyrural.com.au

Hunter McMurtrie

0488 418 785

hm@kennedyrural.com.au

Jim Friend

0488 418 807

jf@kennedyrural.com.au

**Licensed Real Estate Agents, Livestock  
Agents & Auctioneers**



**[www.kennedyrural.com.au](http://www.kennedyrural.com.au)**



# STOCKPLACE

• M A R K E T I N G •

**STOCK FOR PLACES, PLACES FOR STOCK**

 [www.stockplace.com.au](http://www.stockplace.com.au)  **07 4741 3085**



*Sara Westaway, Luke Westaway, Molly Lyttle, Ashley Naclerio, Susan Coates, James Coates*

## LIVESTOCK AND RURAL PROPERTY ENQUIRIES:

**LUKE WESTAWAY**

**0413 408 953**

[luke@stockplace.com.au](mailto:luke@stockplace.com.au)

**ASHLEY NACLERIO**

**0400 448 679**

[ashley@stockplace.com.au](mailto:ashley@stockplace.com.au)

**JAMES COATES**

**0427 333 007**

[james@stockplace.com.au](mailto:james@stockplace.com.au)

## ADMINISTRATION ENQUIRIES:

**SUSAN COATES**

**0407 218 679**

[office@stockplace.com.au](mailto:office@stockplace.com.au)

**MOLLY LYTTLE**

**0458 588 679**

[web@stockplace.com.au](mailto:web@stockplace.com.au)

**[www.stockplace.com.au](http://www.stockplace.com.au)**

Your Livestock & Property Marketplace



AuctionsPlus

# CONNECTING AG

*More than a Marketplace*



**OVER 225,000**

UNIQUE USERS  
EVERY MONTH



**4,200+**

ACTIVE BIDDERS  
PER MONTH



**NATIONAL**

AUSTRALIAN  
AUDIENCE



**CUSTOMISED**

TAILORED PACKAGES  
AVAILABLE



"As a breeder, we were trying to maximise the exposure of our sale cattle. By using AuctionsPlus, we have been able to create another market for our cattle, reaching buyers, who outside of a local saleyard would have never seen our cattle before."

*Dean Kiernan, Droughtmaster Breeder, Qld*



**BOOK YOUR SALE  
WITH AUCTIONSPLUS**

[info@auctionsplus.com.au](mailto:info@auctionsplus.com.au)

## Contact Us



(02) 9262 4222



[www.auctionsplus.com.au](http://www.auctionsplus.com.au)

[@auctionsplus](https://www.instagram.com/auctionsplus)



Photo Credit: Dean Kiernan

# Angel Flight Bull - LOT 1

*Dedicated to the memory of John Hosie*

Thank you to Barronessa Farming who have generously donated their lead bull whose 100% of proceeds will go to Angel Flight. Agents have also waived commission on this Lot.



**1**

**BARONESSA VOYAGER U62**  
**BARRONESSA FARMING**

**IDENT: JOE23UU62**  
**DOB:18/09/2023**  
**COLOUR: BLACK AGE: 20MTHS**

**COLEMAN CHARLO 0256 (P)**

**SIRE: S A V CHECKMATE 8158 (P)**

**S A V EMBLYNETTE 6506 (P)**

**SUHN'S MAJESTIK BEACON 30C (PP)**

**DAM: LM MS BEACON 607H4 (P) (AI)**

**MS LAKE MAJESTIK MLLHSE 607C (P) (ET)**

SS	+2.5
MILK	+3
200DW	+18
400DW	+37
600DW	+40

Notes: Sired by standout american angus bull SAV CHECKMATE 8158. Checkmate impacts outstanding muscle shape and fertility. His dam is from the Beacon family known for strong maternal traits and excellent structure. Voyager offers early maturing growth, softness and fertility. He is an ideal bull for herds needing calving ease without sacrificing performance.



**2****BARONESSA PATHFINDER U8  
BARRONESSA FARMING****IDENT - JOE23UU8  
DOB: 31/01/2023  
COLOUR: BLACK AGE: 28 MTHS****MC NUFF SAID 889T50 (P)****SIRE: BWCC BIG TOWN 192B16 (PP)****BWCC RS REVELATION 192W8 (P)****S A V BISMARCK 5682 (P)****DAM: S A V MADAME PRIDE 9803 (P)****S A V MADAME PRIDE 5290 (P)**

SS	+2.8
MILK	+4
200DW	+20
400DW	+42
600DW	+53

**Notes: Sired by BWCC BIG TOWN 192B16 one of Blackwater Cattle Co leading sires.****3****BARONESSA DAYTONA U17 (PP) (ET)  
BARRONESSA FARMING****IDENT - JOE23UU17  
DOB: 09/02/2023  
COLOUR: BLACK AGE: 28 MTHS****MC NUFF SAID 889T50 (P)****SIRE: BWCC BIG TOWN 192B16 (PP)****BWCC RS REVELATION 192W8 (P)****S A V FINAL ANSWER 0035 (P)****DAM: S A V ERICA 1049 (P)****S A V ERICA 9448 (P)**

SS	+3.5
MILK	+7
200DW	+26
400DW	+49
600DW	+62

**Notes: A full brother to PATHFINDER brings explosive early growth (Top 7% for 400 day weight) backed by the genetic power of BIG TOWN & MADAME PRIDE. Combines carcass quality, maternal strength and fertility. Suited for serious herd building or commercial bull production.**



**4**

**BARONESSA HILUX U20 (PP) (ET)**  
**BARRONESSA FARMING**

**IDENT - JOE23UU20**  
**DOB: 09/02/2023**  
**COLOUR: BLACK AGE: 28 MTHS**

**MC NUFF SAID 889T50 (P)**

**SIRE: BWCC BIG TOWN 192B16 (PP)**

**BWCC RS REVELATION 192W8 (P)**

**S A V EMBLYNETTE 2225 (P)**

**DAM: S A V EMBLYNETTE 2225 (P)**

**S A V EMBLYNETTE 3301 (P)**

SS	+2.6
MILK	+3
200DW	+21
400DW	+41
600DW	+55

Notes: Hilux offers a very strong balance between growth, milk production (Top 2% for milk) and structural soundness. Homozygous polled, strong bone and muscling, backed by elite American angus genetics. He's a bull that will leave weight and fertility in commercial herds.

**5**

**BARONESSA RIVIAN U2 (PP) (AI)**  
**BARRONESSA FARMING**

**IDENT - JOE23UU2**  
**DOB: 20/01/2023**  
**COLOUR: BLACK AGE: 28 MTHS**

**S A V PRESIDENT 6847 (PP) (ET)**

**SIRE: S A V AMERICA 8018 (PP)**

**S A V MADAME PRIDE 0075 (P)**

**MC HIGH QUALITY 535Y (PP)**

**DAM: BARONESSA HIGH QUALITY 541 R9 (PP) (AI)**

**TELPARA HILLS MISS CSONKA 541F25 (PP) (ET)**

SS	+3.2
MILK	+5
200DW	+22
400DW	+38
600DW	+49

Notes: Rivian is a son of S A V AMERICA 8018 the world record \$1.5mil USD Angus Bull renowned for explosive growth. Rivian brings this elite growth combined with a moderate frame and softness, offering big performance potential into any commercial program.

**6**

**BARONESSA V8 U25 (PP) (AI)**  
**BARRONESSA FARMING**

**IDENT - JOE23FU25**  
**DOB: 10/03/2023**  
**COLOUR: BLACK AGE: 27 MTHS**

**SUHN'S FOUNDATION 331Z28 (PP)**

**SIRE: SF BRICKHOUSE 909D9 (PP)**

**SF MISS LTD 909Z4P**

**B/R NEW FRONTIER 095 (P) (ET)**

**DAM: BARONESSA NEW FRONTIER 541 (PP) (AI)**

**TELPARA HILLS MISS CSONKA 541F25 (PP) (ET)**

SS	+2.6
MILK	-3
200DW	+18
400DW	+28
600DW	+28

Notes: V8 is sired by SF BRICKHOUSE 909D9, a sire noted for functional, moderate cattle with excellent fertility, carcass merit and udder quality. Brickhouse sons have sold to \$70k in the US & Aus. Barronessa V8 offers strong 200-400 day growth and is a true commercial bull - moderate, easy doing and muscle packed.

**7**

BARRONESSA TRAILBLAZER U6 (PP) (ET)

**BARRONESSA FARMING**

IDENT - JOE23UU6

DOB: 30/01/2023

COLOUR: BLACK AGE: 28 MTHS

MC NUFF SAID 889T50 (P)

**SIRE: BWCC BIG TOWN 192B16 (PP)**

BWCC RS REVELATION 192W8 (P)

RITO 707 OF IDEAL 3407 7075 (P)

**DAM: S A V BLACKCAP MAY 1434 (P)**

S A V BLACKCAP MAY 4136 (P)

SS	+1.8
MILK	+3
200DW	+20
400DW	+38
600DW	+48

Notes: Trailblazer carries the muscle and growth of BIG TOWN combined with maternal strength from S A V BLACKCAP MAY 1434 - one of the most productive and sale topping cow lines in the Angus breed.

Trailblazer offers strong fertility EBV's and growth performance, perfect for improving both weight and reproductive traits.

**8**

BARRONESSA WILDTRACK U13 (PP) (ET)

**BARRONESSA FARMING**

IDENT - JOE23UU13

DOB: 06/02/2023

COLOUR: BLACK AGE: 28 MTHS

MC NUFF SAID 889T50 (P)

**SIRE: BWCC BIG TOWN 192B16 (PP)**

BWCC RS REVELATION 192W8 (P)

RITO 707 OF IDEAL 3407 707 (P)

**DAM: S A V BLACKCAP MAY 1434 (P)**

S A V BLACKCAP MAY 4136 (P)

SS	+2.4
MILK	+2
200DW	+25
400DW	+44
600DW	+58

Notes: Wildtrack is bred for carcase quality and moderate maturity. Top 10% IMF EBV, ideal for finishing calves for MSA or branded beef programs. Combined carcase merit and softness from his BLACKCAP MAY maternal line, proven worldwide for premium beef production.

**9**

BARRONESSA CANYON U56 (PP) (ET)

**BARRONESSA FARMING**

IDENT - JOE23RU56

DOB: 15/08/2023

COLOUR: BLACK AGE: 22 MTHS

MC NUFF SAID 889T50 (P)

**SIRE: BWCC BIG TOWN 192B16 (PP)**

BWCC RS REVELATION 192W8 (P)

CB FINAL CUT 924X (PP)

**DAM: TELPARA HILLS MISS FINAL CUT 920J18 (PP) (ET)**

MS 38 CENTER RANCH 920/M1 (P)

SS	+0.9
MILK	-2
200DW	+22
400DW	+46
600DW	+51

Notes: Canyon combines BIG TOWN'S explosive growth with maternal strength from the FINAL CUT family - one of Australia's highest performing Brangus Cow lines. Soft, early maturing, with carcase quality and excellent growth for age. A younger bull who shows outstanding commercial potential.

**10****BARRONESSA CAYENNE U38 (PP) (ET)****BARRONESSA FARMING****IDENT - JOE23UU38****DOB: 02/05/2023****COLOUR: BLACK AGE: 25 MTHS****MC NUFF SAID 889T50 (P)****SIRE: BWCC BIG TOWN 192B16 (PP)****BWCC RS REVELATION 192W8 (P)****S A V HARVESTOR 0338 (PP)****DAM: S A V EMBLYNETTE 2225 (P)****S A V EMBLYNETTE 3301 (P)**

SS	+2.0
MILK	+2
200DW	+19
400DW	+37
600DW	+45

Notes: Cayenne is out of the world renowned Emblynette angus cow family. With top 6% IMF EBV, moderate frame and strong muscling, Cayenne is ideal for operations targeting MSA carcass premiums.

**11****BARRONESSA CAVALIER U64 (P) (ET)****BARRONESSA FARMING****IDENT - JOE23RU64****DOB: 20/09/2023****COLOUR: BLACK AGE: 20MTHS****MAR INNOVATION 251 (P)****SIRE: VOREL ABSTRACT 25E9 (PP) (AI)****VOREL MS 30T 25Z (P)****SUHN'S MAJESTIK BEACON 30C (PP)****DAM: LM MS BEACON 607H4 (P) (AI)****MS LAKE MAJESTIK MLLHSE 607C (P) (ET)**

SS	+2.7
MILK	+1
200DW	+16
400DW	+31
600DW	+32

Notes: Cavalier is sired by VOREL ABSTRACT 25E9, a proven US sire whose progeny have grossed over \$1mil in Aus & the USA. Abstract delivers exceptional calving ease, growth, fertility and carcass merit. Backed by BEACON maternal strength Cavalier offers fertility, structural correctness and strong doing ability for long term herd improvement.

**12****BARRONESSA MONARO U58 (P) (ET)****BARRONESSA FARMING****IDENT - JOE23RU58****DOB: 17/09/2023****COLOUR: BLACK AGE: 21 MTHS****MAR INNOVATION 251 (P)****SIRE: VOREL ABSTRACT 25E9 (PP) (AI)****VOREL MS 30T 25Z (P)****SUHN'S MAJESTIK BEACON 30C (PP)****DAM: LM MS BEACON 607H4 (P) (AI)****MS LAKE MAJESTIK MLLHSE 607C (P) (ET)**

SS	+2.7
MILK	+1
200DW	+16
400DW	+31
600DW	+33

Notes: Monaro, a full brother of Cavalier, comes the same elite balance of fertility, moderate birth, early growth and carcass traits. Sired by ABSTRACT who delivers performance progeny. Monaro is built for efficient, profitable commercial performance under tough conditions.

**13****WOONALLEE SIMMENTALS**DOB: 26/09/2023  
COLOUR: BLACK AGE: 20MTHS

WOONALLEE LICORICE L006  
**SIRE: WOONALLEE RAWHIDE**  
WOONALLEE SASSY L372  
HOOKS BEACON 56B  
**DAM: WOMBRAMURRA P189**  
WOONALLEE HAYLEY L153

SS	
MILK	
200DW	
400DW	
600DW	

Notes: Homozygous Polled &amp; Homozygous Black

**14****WOONALLEE MESSIAH U702 (PP)**  
**WOONALLEE SIMMENTALS**IDENT - WEE3U702  
DOB: 30/09/2023  
COLOUR: BLACK AGE: 20 MTHS

WOONALLEE MESSIAH  
**SIRE: WOONALLEE Q085**  
WEBB TANK J670  
LANCASTER JUGGLER J155  
**DAM: WOONALLEE BOOM TIME P407**  
WOONALLEE BOOM TIME K300

SS	
MILK	
200DW	
400DW	
600DW	

Notes: Homozygous Polled &amp; Homozygous Black

**15****WOONALLEE SHOWSTOPPER U606 (PP)**  
**WOONALLEE SIMMENTALS**IDENT - WEEPU606  
DOB: 09/09/2023  
COLOUR: BLACK AGE: 20MTHS

BONNYDALE NUKARA  
**SIRE: WOONALLEE SHOW STOPPER**  
WOONALLEE SIMPLY THE BEST Q109  
NARACOOPA NEUMANN  
**DAM: WOONALLEE CHARO R759**  
WOONALLEE CHARO H214

SS	
MILK	
200DW	
400DW	
600DW	

Notes: Homozygous Polled &amp; Homozygous Black

**16**

WOONALLEE CONVERSION U581 (PP)

**WOONALLEE SIMMENTALS**

IDENT - WEE1U581

DOB: 06/09/2023

COLOUR: BLACK AGE: 20MTHS

MILLAH MURRAH CONVERSION L298

**SIRE: WOMBRAMURRA Q129**

WOMBRAMURRA XSIM MISS L ONE K2

WEBB UPPERCUT H0613

**DAM: WOONALLEE BOOMTIME M348**

PATHFINDER BOOMTIME E463

SS	
MILK	
200DW	
400DW	
600DW	

Notes: Homozygous Polled &amp; Homozygous Black

**17****49 - 7/8 CHAROLAIS**

M &amp; B DAVISON INVESTMENTS

IDENT - 49 - HERD BULL

DOB: 11/2023

COLOUR: RED/F AGE: 19MTHS

**SIRE: BAUHINIA PARK & PALGROVE BULLS****DAM: MOONDAH 3/4 CHAROLAIS COW**

SS	
MILK	
200DW	
400DW	
600DW	

Notes: Sired by BAUHINIA PARK & PALGROVE Charolais Bulls out of the highly fertile 3/4 MOONDAH Charolais cow. Bulls are mated on a 4 month window. All bulls are paddock raised with 3/4 pea ration. Charolais bred in the North West for the Western Climate. (Mating time Dec-April)

**18****41 - 7/8 CHAROLAIS**

M &amp; B DAVISON INVESTMENTS

IDENT - 41 - HERD BULL

DOB: 11/2023

COLOUR: RED/F AGE: 19MTHS

**SIRE: BAUHINIA PARK & PALGROVE BULLS****DAM: MOONDAH 3/4 CHAROLAIS COW**

SS	
MILK	
200DW	
400DW	
600DW	

Notes: Sired by BAUHINIA PARK & PALGROVE Charolais Bulls. Out of the Highly fertile 3/4 Charolais Moondah Cow. Bulls come from a controlled mating herd. (4 month join). Bulls are paddock raised on buffel & supplemented on 3/4 pea ration. Charolais bred in the North West for the Western Climate.



**19****8 - 7/8 CHAROLAIS**  
**M & B DAVISON INVESTMENTS****DOB: 11/2023**  
**COLOUR: RED/F AGE: 19MTHS****SIRE: BAUHINIA PARK & PALGROVE BULLS****DAM: MOONDAH 3/4 CHAROLAIS COW**

SS	
MILK	
200DW	
400DW	
600DW	

Notes: Sired by BAUHINIA PARK & PALGROVE Charolais Bulls. Out of the Highly fertile 3/4 Charolais Moondah Cow. Bulls come from a controlled mating herd. (4 month join). Bulls are paddock raised on buffel & supplemented on 3/4 pea ration. Charolais bred in the North West for the Western Climate.

**20****12 - 7/8 CHAROLAIS**  
**M & B DAVISON INVESTMENTS****IDENT - 12 - HERD BULL**  
**DOB: 11/2023**  
**COLOUR: WHITE AGE: 19MTHS****SIRE: BAUHINIA PARK & PALGROVE BULLS****DAM: MOONDAH 3/4 CHAROLAIS COW**

SS	
MILK	
200DW	
400DW	
600DW	

Notes: Sired by BAUHINIA PARK & PALGROVE Charolais Bulls. Out of the Highly fertile 3/4 Charolais Moondah Cow. Bulls come from a controlled mating herd. (4 month join). Bulls are paddock raised on buffel & supplemented on 3/4 pea ration. Charolais bred in the North West for the Western Climate.

**21****7 - 7/8 CHAROLAIS**  
**M & B DAVISON INVESTMENTS****IDENT - 7 - HERD BULL**  
**DOB: 11/2023**  
**COLOUR: WHITE AGE: 19MTHS****SIRE: BAUHINIA PARK & PALGROVE BULLS****DAM: MOONDAH 3/4 CHAROLAIS COW**

SS	
MILK	
200DW	
400DW	
600DW	

Notes: Sired by BAUHINIA PARK & PALGROVE Charolais Bulls. Out of the Highly fertile 3/4 Charolais Moondah Cow. Bulls come from a controlled mating herd. (4 month join). Bulls are paddock raised on buffel & supplemented on 3/4 pea ration. Charolais bred in the North West for the Western Climate.

**22****9 - 7/8 CHAROLAIS**  
**M & B DAVISON INVESTMENTS****IDENT - 9 - HERD BULL**  
**DOB: 11/2023**  
**COLOUR: WHITE AGE: 19MTHS****SIRE: BAUHINIA PARK & PALGROVE BULLS****DAM: MOONDAH 3/4 CHAROLAIS COW**

SS	
MILK	
200DW	
400DW	
600DW	

Notes: Sired by BAUHINIA PARK & PALGROVE Charolais Bulls. Out of the Highly fertile 3/4 Charolais Moondah Cow. Bulls come from a controlled mating herd. (4 month join). Bulls are paddock raised on buffel & supplemented on 3/4 pea ration. Charolais bred in the North West for the Western Climate.

**23****JEGAH 39**  
**JEGAH BRAHMANS****IDENT - 39 - HERD BULL**  
**DOB: 12/2023**  
**COLOUR: GREY AGE: 18MTHS****LANES CREEK IRONWOOD 1591****SIRE: WILANGI HIKER 7905**  
**WILANGI 6341****DAM: JEGAH BRAHMAN COW**

SS	
MILK	
200DW	
400DW	
600DW	

Notes: Young sire of only 18 months old.

**24****JEGAH 40**  
**JEGAH BRAHMANS****IDENT - 40 - HERD BULL**  
**DOB:12/2023**  
**COLOUR: GREY AGE: 18 MTHS****LANES CREEK IRONWOOD 1591****SIRE: WILANGI HIKER 7905**  
**WILANGI 6341****DAM: JEGAH BRAHMAN COW**

SS	
MILK	
200DW	
400DW	
600DW	

Notes:



# Tissue Sampling Unit (TSU)

Allflex® Tissue Sampling Units provide a simple but effective means for DNA testing livestock. Collect a clean, uncontaminated sample in seconds with a single squeeze motion. TSUs are easy to use and yield excellent lab results.

TSUs can be paired with a matching NLIS and visual management tag, creating a simple link between the genetics of an animal and its identification.

For more information, visit [allflex.com.au](http://allflex.com.au)

Questions?

1300 138 247  
[allflexcs@msd.com](mailto:allflexcs@msd.com)

® Registered trademarks.

Copyright © 2024 Merck & Co., Inc., Rahway, NJ, USA and its affiliates. All rights reserved.



# M•D•M

MEDIA DIGITAL MARKETING

**Jim Pola**

27 Hughes Street, Hermit Park  
Townsville QLD 4812

Mobile: **0408 756 438**

Email: [jamesapola@gmail.com](mailto:jamesapola@gmail.com)

[www.jimpolamarketing.com.au](http://www.jimpolamarketing.com.au)



## Gener8

**REPRODUCTION**

**07 3733 1520 / 0409635770**

[info@gener8repro.com](mailto:info@gener8repro.com)

[gener8rero.com.au](http://gener8rero.com.au)

### REPRODUCTION SERVICES

- Semen collection & processing
- Marketing & semen sales
- Artificial breeding programs
- Semen morphology assessments
- Logistics
- Storage
- Products & equipment
- Carcass scanning

### VETERINARY SERVICES

- Cattle vaccinations & parasite control
- Pregnancy testing & ultrasound scanning
- Disease investigations
- Bull breeding soundness exams
- Health checks & surgery

## MEET THE TEAM



**Zeta**  
Centre  
Coordinator



**Regan**  
On centre  
senior Vet



**Matthew**  
Senior Vet



**Callan**  
Vet  
Director  
(General & Tropical Vets)



**Shannen**  
Vet  
Director  
(Tropical Vets)



**Zane**  
Vet  
Director  
(Tropical Vets)

**25****TRIPLE E WINTON  
TRIPLE E BRAHMANS****IDENT - EX362  
DOB:19/12/2023  
COLOUR: GREY AGE: 17 MTHS**

CLUKAN STOCKIE 1438  
**SIRE: TRIPLE E SIR PAGE**  
XMS LEESHA  
POLLED PATHFINDER 24  
**DAM: TRIPLE E MISS LEESA**  
XMS LEESA

SS	+0.1
MILK	-2
200DW	+23
400DW	+30
600DW	+37

Notes:

**26****GI REALITY 3813 (PS)  
GI BRAHMAN STUD PTY LTD****IDENT - HAR3831M  
DOB:04/02/2023  
COLOUR: RED AGE: 28MTHS**

GI PERY (PS)  
**SIRE: GI EXCELLENCE 3123 (PP)**  
GI WILMA VERONICA (PS)  
GI MARVIN (PS)  
**DAM: GI CADDIE VIMMA 2612 (H)**  
GI CADDIE (PS)

SS	+1.0
MILK	-
200DW	+12
400DW	+14
600DW	+19

Notes:

**27****GI ROY 3850 (PP)  
GI BRAHMAN STUD PTY LTD****IDENT - HAR3850M  
DOB: 03/03/2023  
COLOUR: RED AGE: 27MTHS**

KENROL MR HJ RAY 0366 (ET) (PS)  
**SIRE: KENROL HJ SONIC RAY 2974 (PP)**  
RODLYN MISS 76/06 (ET) (PP)  
ROCKLEY SENATOR 2909 (PS)  
**DAM: GI CHATRARAS OLIVENE (PS)**  
GI CHARTARA WHISPER 2685 (PS)

SS	-0.5
MILK	-2
200DW	+14
400DW	+22
600DW	+33

Notes:



**28****GI REDMAN 3863 (PP)**  
**GI BRAHMAN STUD PTY LTD****IDENT - HAR3863M**  
**DOB: 20/04/2023**  
**COLOUR: RED AGE: 25MTHS**

**KENROL MR HJ RAY 0366 (ET) (PS)**  
**SIRE: KENROL HJ SONIC RAY 2974 (PP)**  
**RODLYN MISS 76/06 (ET) (PP)**  
**GI EXCELLENCE 3123 (PP)**  
**DAM: GI FEDOIRAS NOBELLA (PS)**  
**GI FEDOIRA VADA (PS)**

SS	-0.3
MILK	-2
200DW	+12
400DW	+17
600DW	+27

Notes:

**29****GI RENALDO 3860 (PS)**  
**GI BRAHMAN STUD PTY LTD****IDENT - HAR3860M**  
**DOB: 06/04/2023**  
**COLOUR: GREY AGE: 26MTHS**

**JDH SIR STRATTON MANSO 823/4 (IMP US) (H)**  
**SIRE: LANES CREEK SIR SOLOMON 1701 (AI) (PS)**  
**LANES CREEK KIRSTEN E0206 (ET) (PS)**  
**CLUKAN AXEL 333/7 (ET) (PS)**  
**DAM: GI ORISSAS BASHFUL LASS (PS)**  
**GI ELSAS BASHFUL LASS (PS)**

SS	+0.5
MILK	-1
200DW	+26
400DW	+35
600DW	+49

Notes:

**30****KH 620**  
**GI BRAHMAN STUD PTY LTD****IDENT - KH620 - HERD BULL**  
**DOB: 06/2023**  
**COLOUR: GREY AGE: 24 MTHS****SIRE: CLUKAN AXEL SON****DAM: PUREBRED BRAHMAN COW**

SS	
MILK	
200DW	
400DW	
600DW	

Notes: By a son of the \$100,000 CLUKAN AXEL out of a Purebred Brahman Cow

**31****KH 666****GI BRAHMAN STUD PTY LTD****IDENT - KH666 - HERD BULL****DOB:06/2023****COLOUR: GREY AGE: 24 MTHS****SIRE: CLUKAN AXEL SON****DAM: PUREBRED BRAHMAN COW**

SS	
MILK	
200DW	
400DW	
600DW	

Notes: By a son of the \$100,000 CLUKAN AXEL out of a Purebred Brahman Cow

**32****GYRANDA VIRGIL V288 (P)****GYRANDA PASTORAL CO****IDENT - GYR24MV288****DOB: 16/09/2023****COLOUR: RED AGE: 21MTHS****GYRANDA MULGA BILL M482****SIRE: GYRANDA SPINIFEX S220 (P)****GYRANDA K787 (P)****GYRANDA GARWOOD G684 (PS)****DAM: GYRANDA N259****GYRANDA F193**

SS	+1.2
MILK	+2
200DW	+13
400DW	+21
600DW	+35

Notes: A very stylish bull-typical of the spinifex line. A good balance of data throughout with emphasis on fertility. Hid Dam GYRANDA N259 has weaned seven calves in seven years and is pregnant again.

**33****GYRANDA VANCE V232 (AI) (PP)****GYRANDA PASTORAL CO****IDENT - GYR24MV232****DOB: 31/08/2023****COLOUR: RED AGE: 21MTHS****ROWANLEA MILLIONAIRE M42 (P)****SIRE: ROWANLEA RUDOLPH R56 (P)****ROWANLEA NIFTY N115 (P)****GREENUP GIZZA G218 (PS)****DAM: GYRANDA Q173 (P)****GYRANDA K439 (P)**

SS	+2.6
MILK	0
200DW	+20
400DW	+33
600DW	+41

Notes: A clean coated bull with superb muscling. In fact, he has a data set with... well with it all! Top 10% of the breed for growth, fertility, IMF &amp; temperament. Not far behind for carcass trait and a homozygous poll bull to boot! His Dam has never missed a calf, weaning 5/5, while her dam has just weaned her tenth calf in ten years!

**34****GYRANDA VALLEY V360 (PP)**  
**GYRANDA PASTORAL CO****IDENT - GYR24MV360**  
**DOB: 19/09/2023**  
**COLOUR: RED AGE: 21MTHS****WARENDA KILIMANJARO K4 (P)**  
**SIRE: SANTAHAT Q144 (P)**  
SANTAHAT M8  
CREE KOMATSU K144 (PP)  
**DAM: GYRANDA P447 (P)**  
GYRANDA J669

SS	+0.5
MILK	-1
200DW	+24
400DW	+36
600DW	+52

Notes: A high growth sire going back to WARENDA KILIMANJARO K4. Plenty of muscle, melded with good fats. A real production bull. His Dam GYRANDA P447 (P) has weaned five calves in six years and is pregnant again.

**35****GYRANDA VILLAGER V830 (PP)**  
**GYRANDA PASTORAL CO****IDENT - GYR24MV830**  
**DOB: 20/12/2023**  
**COLOUR: RED AGE: 18MTHS****GREENUP N330 (P)**  
**SIRE: EIDSVOLD STATION R34 (PP)**  
EIDSVOLD STATION E1013 (P)  
ROSEVALE DEMOCRAT G268 (P)  
**DAM: GYRANDA P641 (P)**  
GYRANDA F189 (P)

SS	+1.5
MILK	+3
200DW	+20
400DW	+28
600DW	+33

Notes: A much younger homozygous polled bull with an early growth pattern and great carcass data. Dam GYRANDA P641 has weaned four calves in five years and is pregnant again.

**36****GYRANDA VENTURA V588 (PS)**  
**GYRANDA PASTORAL CO****IDENT - GYR24MV588**  
**DOB: 15/09/2023**  
**COLOUR: RED AGE: 21MTHS****ROSEVALE DOWNPOUR K6 (PS)**  
**SIRE: WIGHTFIELDS NESS (PP)**  
WIGHTFIELDS LISSIE F130  
GYRANDA COSMIC C476  
**DAM: GYRANDA J375**  
GYRANDA C131

SS	+1.5
MILK	0
200DW	+8
400DW	+22
600DW	+34

Notes: A lighter coloured bull with an excellent balance of data delivering indexes in the top 10% of the breed. Low birthweight and quiet. His dam GYRANDA J375 has delivered nine calves in nine years.

**37****GYRANDA V.I.P V536 (PS)**  
**GYRANDA PASTORAL CO****IDENT - GYR24MV536****DOB: 09/09/2023****COLOUR: RED AGE: 21MTHS****GREENUP P356 (PP)****SIRE: GYRANDA SHEPHERD S568 (P)****GYRANDA K281****GYRANDA GARWOOD G648 (PS)****DAM: GYRANDA L339 (P)****GYRANDA F911**

SS	+1.8
MILK	+1
200DW	+13
400DW	+14
600DW	+26

Notes: An early maturing bull, lighter in colour, medium framed but carrying plenty of carcass. His dam GYRANDA L339 has weaned seven calves in eight years, including two bull calves sold for \$14,000 each.

**38****LAZY A 2048 (PP) D5**  
**LAZY A DROUGHTMASTERS****IDENT - ASD232048M****DOB: 26/04/2023****COLOUR: RED AGE: 25MTHS****HAZELWOOD STALLONE (P) D5****SIRE: LOCARNO PRESIDENT (HP) D5****LOCARNO GABRIELLE (P) D5****RONDEL SAKO (P) D5****DAM: POWERMAC 1373 (P) D4****POWERMAL 907 (P) D3**

SS	+0.5
MILK	+4
200DW	+10
400DW	+19
600DW	+24

Notes:

**39****LAZY A 2071 (PH) D3**  
**LAZY A DROUGHTMASTERS****IDENT - ASD232071M****DOB: 06/12/2022****COLOUR: RED AGE: 30MTHS****MEDWAY OOMBABEER (D) D5****SIRE: LOCARNO LOCKE (S) D5****LOCARNO BRIANNA (D) D5****REDSKIN BECKHAM (P) D5****DAM: POWERMAC 903 (P) D2****POWERMAL 28 (P) D1**

SS	+1.8
MILK	+8
200DW	+10
400DW	+21
600DW	+30

Notes:

**40****LAZY A 2044 (PH) D5**  
**LAZY A DROUGHTMASTERS****IDENT - ASD232044M**  
**DOB: 22/04/2023**  
**COLOUR: RED AGE: 25MTHS****HAZELWOOD STALLONE (P) D5****SIRE: LOCARNO PRESIDENT (HP) D5****LOCARNO GABRIELLE (P) D5****RONDEL SAKO (P) D5****DAM: POWERMAC 1492 (P) D5****POWERMAC 857 (P) D4**

SS	+1.2
MILK	+4
200DW	+8
400DW	+15
600DW	+24

Notes:

**41****LAZY A 2186 (P) D5**  
**LAZY A DROUGHTMASTERS****IDENT - ASD242186M**  
**DOB: 01/09/2023**  
**COLOUR: RED AGE: 21MTHS****MEDWAY OOMBABEER (D) D5****SIRE: LOCARNO LOCKE (S) D5****LOCARNO BRIANNA (D) D5****HAMADRA BENDER (P) D5****DAM: POWERMAC 854 (P) D4****POWERMAC 611 (P) D3**

SS	
MILK	
200DW	
400DW	
600DW	

Notes:

**42****LAZY A 2126 (PP)**  
**LAZY A DROUGHTMASTERS****IDENT - HERD BULL**  
**DOB: 01/08/2023**  
**COLOUR: RED AGE: 22MTHS****SIRE: LAXY A 545****DAM: COMMERCIAL DROUGHTMASTER COW**

SS	
MILK	
200DW	
400DW	
600DW	

Notes:



# LAZY A 2235 (PH) D4

## LAZY A DROUGHTMASTERS

**IDENT - ASD24223M**  
**DOB: 02/08/2023**  
**COLOUR: RED      AGE: 22MTHS**

## POWERMAC 785 (P) D2

SS	+1.4
MILK	+3
200DW	+11
400DW	+19
600DW	+26

Notes:\_\_\_\_\_

[illegible]

## BUYERS INSTRUCTIONS SHEET

---

BID CARD NO: \_\_\_\_\_ PIC NO: \_\_\_\_\_

Trading Name: \_\_\_\_\_

Contact Name: \_\_\_\_\_

Address: \_\_\_\_\_

\_\_\_\_\_

\_\_\_\_\_ Postcode: \_\_\_\_\_

Mobile: \_\_\_\_\_ Phone: \_\_\_\_\_

Email: \_\_\_\_\_

Lots purchased: \_\_\_\_\_

Total No of Bulls Purchased: \_\_\_\_\_

Invoice to: \_\_\_\_\_

Delivery: Owners Transport ☐ Carrier ☐

Destination: \_\_\_\_\_

Registration Transfer required ☐ Yes ☐ No

Stud Prefix: \_\_\_\_\_

Buyers Signature: \_\_\_\_\_

Date: \_\_\_\_\_



# LIVESTOCK AUCTION TERMS AND CONDITIONS OF SALE

**CHAPTER ONE - PRELIMINARY** 1. (a) A vendor is bound by these terms and conditions by offering livestock for sale by auction. (b) An agent (which includes an auctioneer) is bound by these terms and conditions by conducting an auction sale. (c) A buyer is bound by these terms and conditions by bidding at auction. (d) Competition and Consumer Act (Cth) 2010 It is unlawful for parties that are, or otherwise would be, in competition with each other to make, or give effect to, a contract, arrangement or understanding that contains a provision relating to: i. price-fixing; or ii. restricting outputs in the production and supply chain; or iii. allocating customers, suppliers or territories; or iv. bid-rigging; or v. collusive bidding. Large fines and other sanctions may be imposed for unlawful conduct. 2. (a) In these terms the expression auctioneer, agent, buyer and vendor respectively includes the servants, contractors and agents of each of them. The auctioneer, agent, buyer and vendor shall be wholly responsible for the acts and omissions of their respective servants, contractors and agents. The term "auctioneer" includes, so far as the law and context permits, the vendor's agent. (b) When used in these terms the expressions "companion animals" means all animals originating from the same property on a particular day. Where lots are split and sent to multiple establishments, then all of these animals shall be regarded as companions. 3. The following applies in interpreting these terms and conditions: (a) The following words have the following meanings: Fees means all levies, charges, fees, costs and other expenses incurred or relating to these terms and conditions and the sale and purchase of livestock including, without limitation, transaction levies, yard and weigh dues, cartage, advertising and rebates, and whether paid for, or incurred, by the agent; Livestock means animals auctioned pursuant to these terms and conditions; and Price means the amount at which the lot has been sold to the buyer referred to in clause 7 of these terms and conditions (i) plus any Fees and other expenses incurred in relation to the purchase of livestock that are payable by the buyer; and (ii) plus any GST added in accordance with clause 12. (b) These terms and conditions are subject to legislation or regulation in the State in which the auction is conducted and in the event of any conflict then the legislation or regulation will prevail. The provisions of these terms and conditions are in addition to, and do not derogate from, the duties and rights of vendors, agents and buyers set out in legislation and regulation in the State in which the auction is conducted.

**CHAPTER TWO - STANDARD TERMS OF SALE** 4. Subject to any reserve price, and to the right, prior to the fall of the hammer, of the vendor to withdraw any lot without declaring the reserve, the highest bidder shall be the buyer. 5. The auctioneer has the right to bid on behalf of the vendor provided that right is notified prior to the commencement of the sale and is subject to State law. 6. A bid cannot be made or accepted after the fall of the hammer unless, in accordance with clause 8, the auctioneer decides to put the lot up again. 7. Prior to the fall of the hammer the auctioneer shall announce the last bid and receive any further bids. The last price called by the auctioneer at the fall of the hammer shall be the amount at which the lot has been sold. 8. In the event of a disputed bid, the auctioneer is the sole arbitrator of the successful bidder or the auctioneer may decide to put the lot up again. The auctioneer's decision is final. 9. The auctioneer may refuse to accept any bid which, in the auctioneer's opinion, is not in the best interest of the vendor and need not give reasons for doing so. 10. A bidder shall be deemed to be a principal unless, prior to bidding, the bidder has given to the auctioneer a copy of written authority to bid for or on behalf of another person. 11. The successful bidder at a livestock auction sale must give to the auctioneer at the fall of the hammer: (a) the purchaser's name; or (b) the bid card number which identifies the purchaser; or (c) the name of the person on whose behalf the successful bid was made; and (d) the Property Identification Code (known as the "PIC") of destination. 12. The auction shall be conducted on the basis that the bid price shall be exclusive of Goods and Services Tax (GST). GST shall be added after the fall of the hammer for those sales subject to GST. 13. The vendor warrants; (a) That the vendor has (or will have) the right to sell the livestock at the time of delivery; and (b) That the purchaser will obtain title on completion of the purchaser's obligations under this contract including payment. 14. If a buyer does not comply with any of these terms and conditions, which includes the requirements of State law, any livestock knocked down to that buyer may be re-sold by public auction or private contract in whatever lots and manner the auctioneer decides. The re-sale may be with or without notice and shall be at the buyer's risk. The buyer is responsible for all loss and expense arising out of a re-sale and is not entitled to any resulting profit. 15. The buyer of livestock must pay the agent the full amount of the purchase price in immediate funds on receipt of a tax invoice. Payment is required prior to delivery unless some other time for payment is specified in an agreement between the buyer and the auctioneer that was made before the fall of the hammer. If, before delivery, payment has not been made then clauses 20 to 23 apply.

16. No person may bid unless, prior to the commencement of the sale, that person has made arrangements satisfactory to the auctioneer for payment for livestock purchased. If bids in breach of this condition are inadvertently accepted, delivery shall not be given until the purchase money is paid and any law, rule or practice to the contrary is accordingly negated as far as possible.

17. (a) Cattle sold on a liveweight basis that are weighed pre-sale are at the risk and expense of the buyer upon the fall of the hammer. (b) Cattle sold on a liveweight basis that are weighed post-sale are at the risk and expense of the buyer immediately after weighing. (c) All livestock other than cattle sold on a liveweight basis are at the risk and expense of the buyer upon the fall of the hammer.

18. (a) Subject to this clause the sale is complete on the fall of the hammer. (b) The time for rejection is the time commencing at the fall of the hammer and ending at the first of: (i) delivery is taken by a representative of the buyer; (ii) departure of the animal from the purchaser's delivery pen; or (iii) one hour after the last animal is: a. in the case of pre-sale weighing, sold; or b. in the case of post-sale weighing, weighed. (c) During the time for rejection the buyer may reject any animal which is lame, blind or diseased where that condition existed prior to the fall of the hammer but could not be reasonably observed when the animal was in the selling pen. (d) If the purchaser rejects an animal during the time for rejection then the sale of that animal is cancelled and the animal is returned to the vendor or sold on such terms as any buyer and the agent may agree, after the agent has disclosed the reason for rejection to that buyer. (e) This subclause applies only to cattle which are sold in Queensland at auction for slaughter. The agent has responsibility for the prevention of loss or escape (but not death, sickness or injury) of those cattle from the time of the fall of the hammer, for delivery to and from the scales, to the buyer's delivery pen and onto the buyer's nominated transport. This responsibility ends at the earlier of those cattle boarding the buyer's nominated transport or sunset on the day after the sale. This subclause does not apply if the agent makes an announcement to that effect prior to sale.

19. (a) Subject to the right of rejection in Clause 18, all conditions and warranties expressed or implied by law are hereby excluded from the sale to the extent that the law allows. All lots are open for inspection prior to the commencement of the sale and are sold with all faults, if any. No compensation shall be given for any faults, imperfections, errors of description, number in or of any lots sold or otherwise. (b) Any claim or objection arising out of an error or misdescription in the provision of relevant information in terms of legislation or regulation concerning the National Livestock Identification Scheme (NLIS) must be made by 5:00pm on the seventh day after the fall of the hammer. No objection, requisition or claim against the vendor or agent in respect of such error or misdescription can be made after that time. (c) Any statements made by the vendor or the auctioneer whether in writing or orally to the effect that any female has been pregnancy tested or scanned positive shall mean and require only that a certificate in writing shall be supplied to the buyer signed by a qualified veterinary surgeon or certified scanner certifying that the said female has been tested or scanned on the date specified in the certificate and that in the opinion of the surgeon or scanner was pregnant on that date. (d) For slaughter cattle, the agent undertakes to make every reasonable effort to ensure that any NLIS cattle device number is transferred from the saleyard PIC to the purchaser's PIC on the NLIS database no later than midnight on the day of the sale. (e) For other slaughter livestock the agent undertakes to make every reasonable effort to ensure that the NLIS information is transferred from the saleyard PIC to the purchaser's PIC on the NLIS database no later than midnight on the day of the sale. (f) Where livestock have a food safety or market eligibility status derived from the National Vendor Declaration (NVD) and/or the NLIS/ERP database, the agent will inform the buyers by presale catalogue and/or announce the status prior to the offering of those lots.



**9am - Friday 13<sup>th</sup> June, 2025**

**RICHMOND FIELD DAYS ALL BREEDS  
BULL SALE**

**RICHMOND RACECOURSE, RICHMOND  
43 Bulls - 6 Breeds - Semen & Morphology Tested**



**Anthony Ball**  
0428 275 499



**Matthew Kennedy**  
0488 418 788



**James Coates**  
0427 333 007

**View photos, videos and bid online with  
Auctions Plus**

